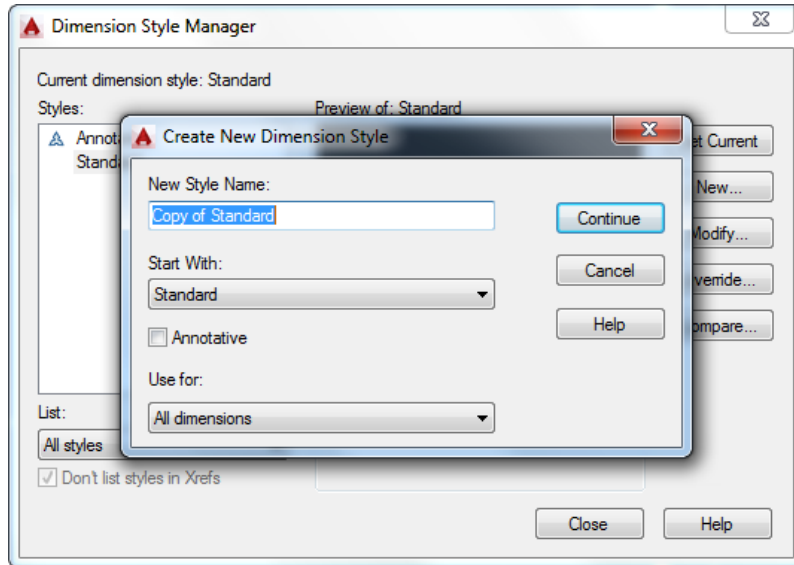


Dimension Style Setup Guide



CREATING A NEW DIM STYLE

- 1 – Open Dim Style Dialogue Box
- 2 – Click New
- 3 – Rename the new style to your name (Ex: Hunt)
- 4 – Start with = “Standard”
- 5 – Click continue

Do Not make any other changes

LINES TAB SETTINGS

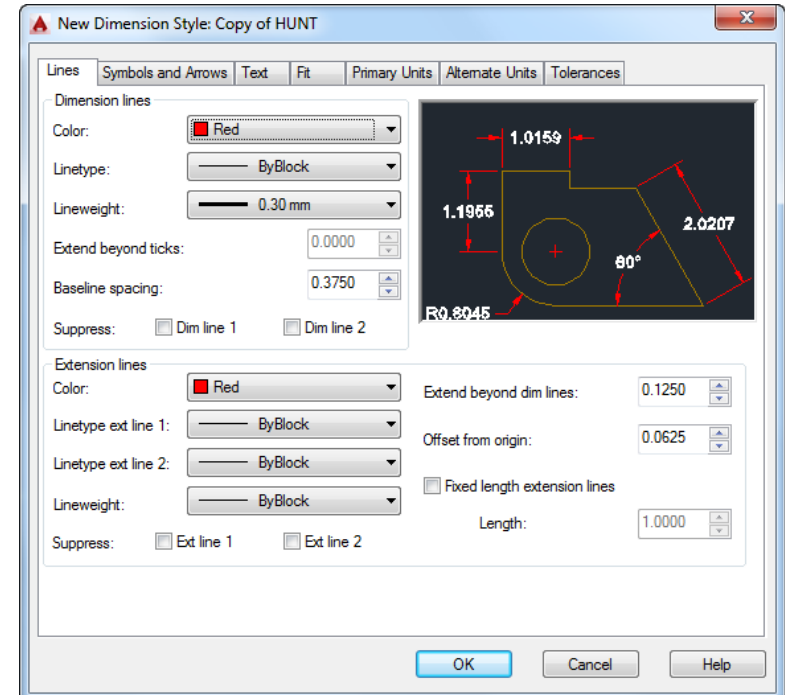
(Dimension Lines)

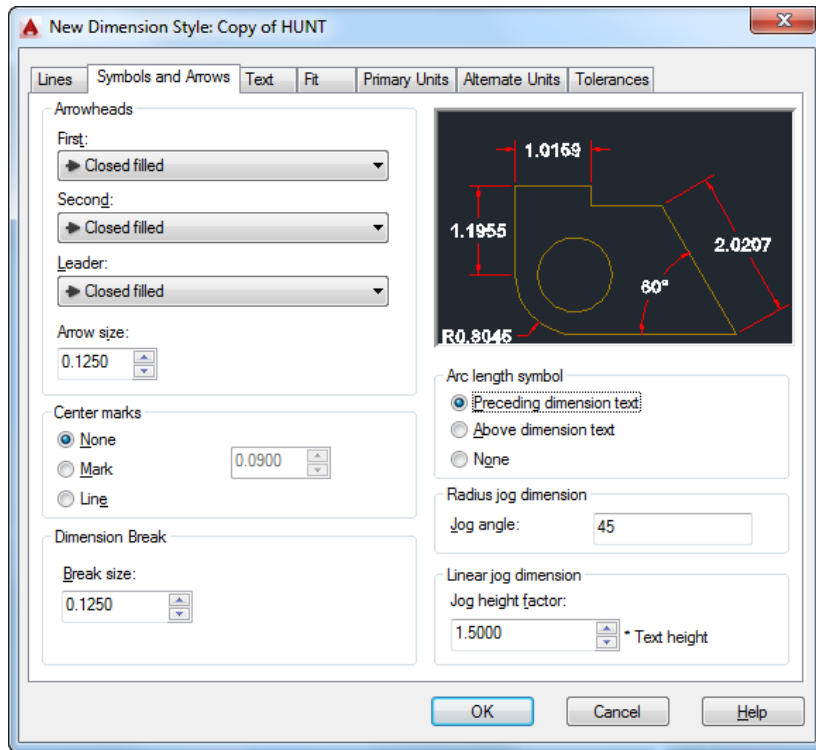
- 1 – Color = RED
- 2 – Lineweight = 0.30
- 3 – Baseline spacing = .3750

(Extension Lines)

- 1 - Color = Red
- 2 – Lineweight = 0.30
- 2 - Extend beyond dim lines = .125
- 3 - Offset from origin = .0625

Do Not make any other changes





SYMBOLS AND ARROWS TAB SETTINGS

(Arrowhead)

- 1 – Closed Filled = 1st, 2nd, and Leader
- 2 – Arrowhead Size = .125

(Center Marks)

- 1 – None

Do Not make any other changes

TEXT TAB SETTINGS

(Text Appearance)

- 1 – Text Style = Standard
- 2 – Text Color = Red
- 3 – Fill Color = none
- 4 – Text Height = .125
- 5 – Fraction Height Scale = 1

(Text Placement)

Centered – Centered – Left-to-Right
Offset from Dim Line = .0625

(Text Alignment)

Depends on the drawing = Check the book!

✓

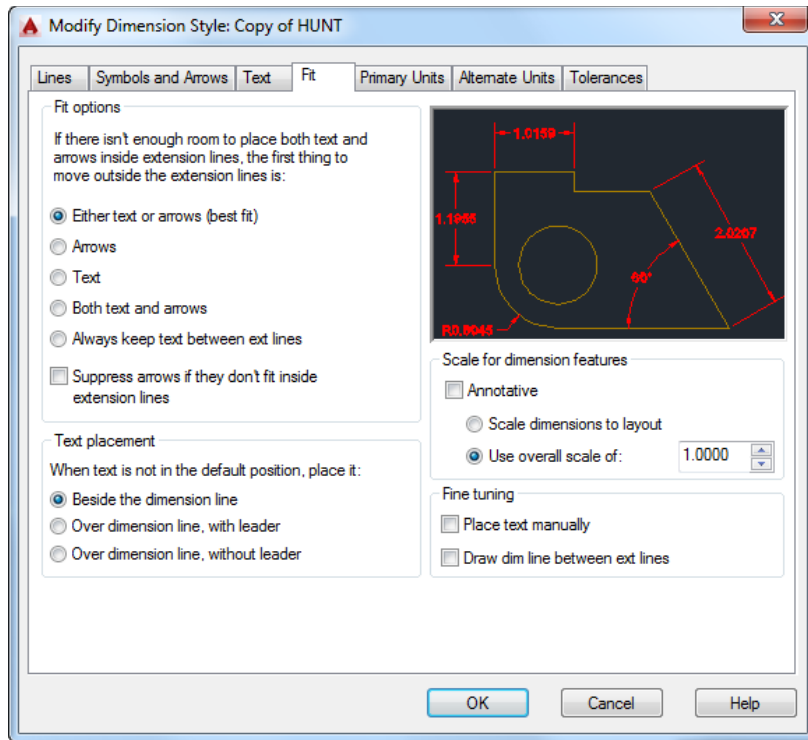
Horizontal = Unidirectional

X

Aligned with dimension line = aligned 100% (radius + dia.)

✓

ISO standard = Aligned except for radius and diameter



FIT TAB SETTINGS

(Fit Options)

We only change these if we are having problems.

See Instructor before you change these

(Text Placement)

Do not change (we change these manually when needed)

(Scale for dimension features)

Use overall scale of _____

(This changes based on drawing scale) 1=Inches &

25.4 = Metric

(Fine tuning)

~~Do Not Change~~

PRIMARY UNITS TAB SETTINGS

(Linear dimensions)

1 – Unit Format = (Decimal or Fractional)

2 – Precision = # of decimal places or lowest fraction

(Measurement Scale)

Scale Factor = Multiplies the Number

Used on scaled drawings (should match TB scale)

Full = 1, 1:2 = .5, etc.

(Zero Suppression) – depends on Inches vs. Metric

Leading ON/OFF

Trailing ON/OFF

INCHES = Suppress Leading – Use trailing for precision

METRIC = Use Leading - Suppress Trailing

(decimal mm are precise enough)

OK, SET CURRENT, CLOSE